

ALL INDIA MOVEMENT FOR SEVA SHAMLAJI HOSPITAL



A BRIEF OF HOSPITAL ACTIVITIES

SHAMLAJI HOSPITAL

AT & POST – SHAMLAJI 383355,

TALUKA – BHILODA, DIST – ARAVALLI

STATE – GUJARAT

Phone No. : 02771 240283 (M) 98250 11265, 98790 32665

Email : shamlaji.hospital@gmail.com

websit : www.shamlajihospital.org

Preface :-

All India Movement for Seva is a national trust. Head office of the trust is situated at Chennai. The Mission of Trust is “To bridge the gap between the mainstream society and less privileged people living in remote, rural & urban area of India by following a planned program of Caring in terms of Education, Health care, Women’s Empowerment and Self-Sufficiency, Vocational Training, Environmental Initiatives, Disaster Relief and Cultural Validation”. Under this mission, Shamlaji Hospital is trying to fulfill trust’s AIM by providing health care services in rural, remote and tribal area of Aravalli district in State of Gujarat.

All India Movement for Seva is running 50 beds Shamlaji Hospital in tribal area of Aravali in District of Gujarat State since 2003. Shamlaji Hospital provides good health care services to approximate 1,00,000 population from near about 100 villages of Shamlaji, Modasa, Bhiloda, Meghraj & from Rajasthan. Most of the patients are Poor and tribal. They cannot afford medical expenses from higher centre. Shamlaji Hospital provides free services to poor tribal patients.

Shamlaji Hospital



2003



2024



Hospital Out Patient Services - General Medical Opd

Four full time Medical Officer consulting outpatient daily in the morning 8.30 am to 12.30pm and in the noon 3.30pm to 5.30pm. Average OPD day is 250 to 300...



Out Door Patients Department DATA		
No.	Year	No.Patients
1	2003-04	19509
2	2012-13	52427
3	2023-24 (Up to Feb.24)	78545

Specialist General Surgeon's OPD



General Surgeon comes on visiting basis twice a week on Wednesday and Friday in morning 2 hours session for consulting of shortlisted patients who required surgical opinion, and on every Sunday for surgery session... Average OPD per session 35-40 and average surgery per session 5-8...

Surgeries Detials		
No.	Year	No.Patients
1	2003-04	216
2	2012-13	177
3	2023-24 (Up tp Feb.24)	472

Fulltime Ophthalmic Department

Hospital has full time ophthalmic setup with all latest equipments, 70-80 patient visit every day for consultation and 20 – 22 patients shortlisted for cataract surgery among them. Shortlisted patients operated by specialist eye surgeon in four sessions organized per week.



Cataract OPD Detials		
No.	Year	No. Patients
1	2003-04	0
2	2012-13	5060
3	2023-24 (Up to Feb.24)	16000

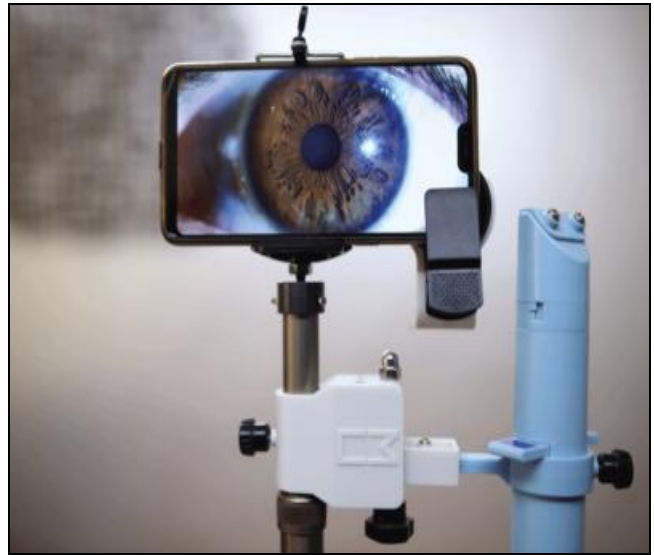
Cataract Surgeries Detials		
No.	Year	No. Patients
1	2003-04	0
2	2012-13	793
3	2023-24 Up to Feb.24)	3653

Ophthalmic Department New Addition:-

C3 Med-Tech Smartphone based Ophthalmic Screening Devices in Partner e-clinics, Eye camps and Mobile Eye Screening settings. C3 Vision-Portable Slit Lamp and C3 Smartphone Fundus device with Volk Retina check-up lens.



Portable Smart Phone Slit Lamp



Portable Smart Phone Fundus Device



During School health Program our Senior Optometrist doing Eye Check up of School children by portable Smart phone based Slit Lamp & Fundus Device

Fulltime Gynecology Department:

Antenatal care clinic



Pregnant women waiting for antenatal care consultation at pregnant women help desk. Gynecologist checkup and consult 30-40 pregnant women everyday for their regular monthly antenatal care....

Gynec OPD Details		
No.	Year	No. Patients
1	2007-08	1309
2	2013-14	1950
3	2023-24 (Up to Feb.24)	6904

Delivery Details		
No.	Year	No. Patients
1	2003-04	49
2	2012-13	458
3	2021-22 (Up to Feb.24)	805

Statistics 2003-2024 (Up to Feb.24)

Total Outdoor Patients Seen (OPD) : 12,34,267

Total Patients Admitted (IPD) : 2,44,538

Total Surgeries: 38,916 (General: 5786, Tubal Ligation: 1782,

Cataract Surgery: 30,915, Plastic Surgery: 433)

Total Deliveries: 10,551

Dialysis Center



Since June 2023 Dialysis center started at Shamlaji Hospital. Patient suffers from kidney diseases and requires dialysis do not need to go to higher center now. Two patients regularly come for dialysis alternate day thrice a week.

Physiotherapy Center



No.	Year	Patient Seen
1	2023-24 (Up to Feb.24)	1392

Nutritive Food Distribution to near by School Children



Shamlaji Hospital distributes nutritive food to the school children on Monday and Friday. Around 100 to 125 children are served food along with their midday meal on every Monday and Friday....

CPR Training to Staff and patient's relatives



The COLS (Compression only life support) emphasis on **early recognition of cardiac arrest and activation**, early chest compression and early transfer to medical facility: Training given to the hospital staff and patients relatives by COLS registered trainer at Shamlaji Hospital training hall.....

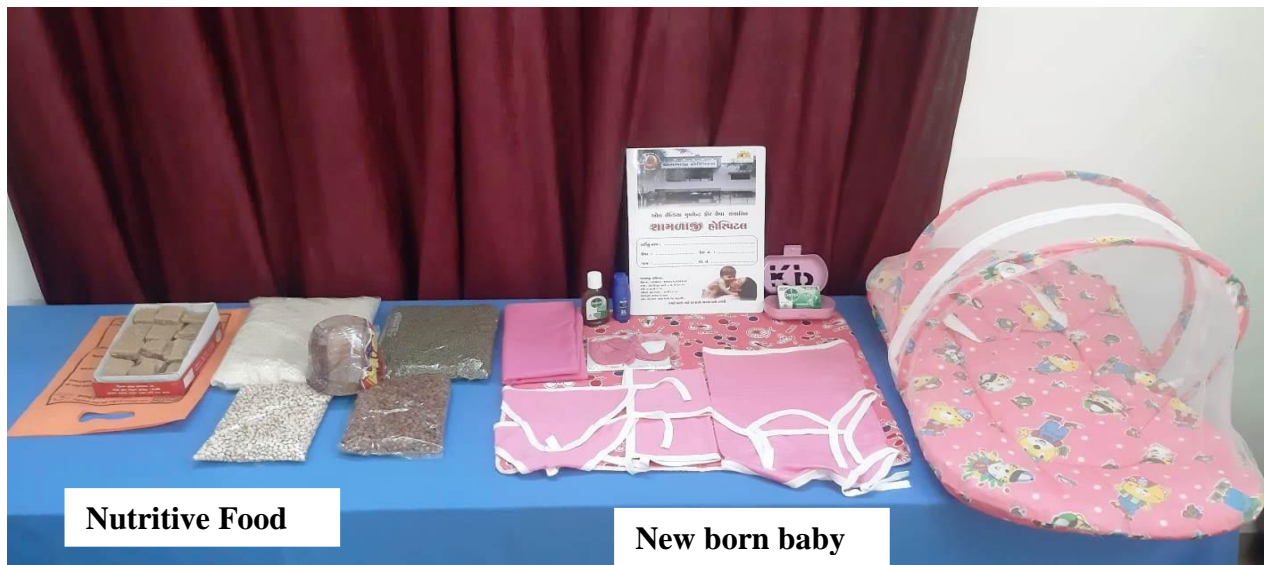
Nutritive Kit Distribution



Total 332 Nutritive kits distributed to the very poor Tuberculosis (TB) - Multi Drugs Resistant [MDR], patients of Shamlaji & Surrounding area. Every month we distribute nutritive food kits to such patients.

No.	Year	Kit
1	2022-23 (Aug.22 onwards)	108
2	2023-24 (Up to Feb. 24)	224

Materanal & Child Welfare Programe:



**We provide nutritive food kit to every mother after
Delivery & New born baby kit to every baby born
At Shamlaji Hospital**

No.	Year	Nutritive Food Kit	New Born Baby Kit
1	2019-20	1014	1014
2	2020-21	677	677
3	2021-22	755	717
4	2022-23	1039	997
5	2023-24 (Up to Feb. 24)	870	819
	Total	4355	4224

OVERALL STATISTICS

Sr. No	Year	OPD	INDOOR	Delivery	SURGERIES				
					General	Plastic	TL	Cataract	Total
1	2003-04	19,509	2,475	49	216	5	0	0	221
2	2004-05	25,231	3,118	41	116	9	0	154	279
3	2005-06	27,109	4,310	148	137	20	0	101	258
4	2006-07	43,607	4,443	241	145	25	0	103	273
5	2007-08	49,554	7,554	240	230	33	247	372	882
6	2008-09	68,841	9,996	345	299	22	273	354	948
7	2009-10	64,691	11,188	389	476	33	303	371	1,183
8	2010-11	36,153	10,629	351	286	17	248	414	965
9	2011-12	43,849	11,671	382	235	35	236	649	1,155
10	2012-13	52,427	11,469	458	177	30	212	793	1,212
11	2013-14	58,258	10,616	411	227	22	187	1,001	1,437
12	2014-15	68,253	10,626	551	192	12	0	1,198	1,402
13	2015-16	66,343	12,760	580	218	19	20	1,496	1,753
14	2016-17	75,364	13,483	596	287	18	0	1,876	2,181
15	2017-18	84,905	16,523	679	349	22	56	2,748	3,175
16	2018-19	98,777	18,561	879	445	17	0	3,193	3,655
17	2019-20	99,074	20,608	1,014	390	18	0	3,681	4,089
18	2020-21	37,030	9,341	677	194	0	0	1,575	1,769
19	2021-22	58,288	15,982	717	262	22	0	3,075	3,359
20	2022-23	78,459	21,355	998	433	27	0	4,108	4,568
21	Up to Feb-24	78,505	17,829	805	473	27	0	3,653	4,153
	TOTAL	12,34,227	2,44,537	10,551	5,787	433	1,782	30,915	38,917